

# India Ink

Flaming Pear Software

## What it does

[What it does](#)

[How to install](#)

[Quick start](#)

[Colors](#)

[Other controls](#)

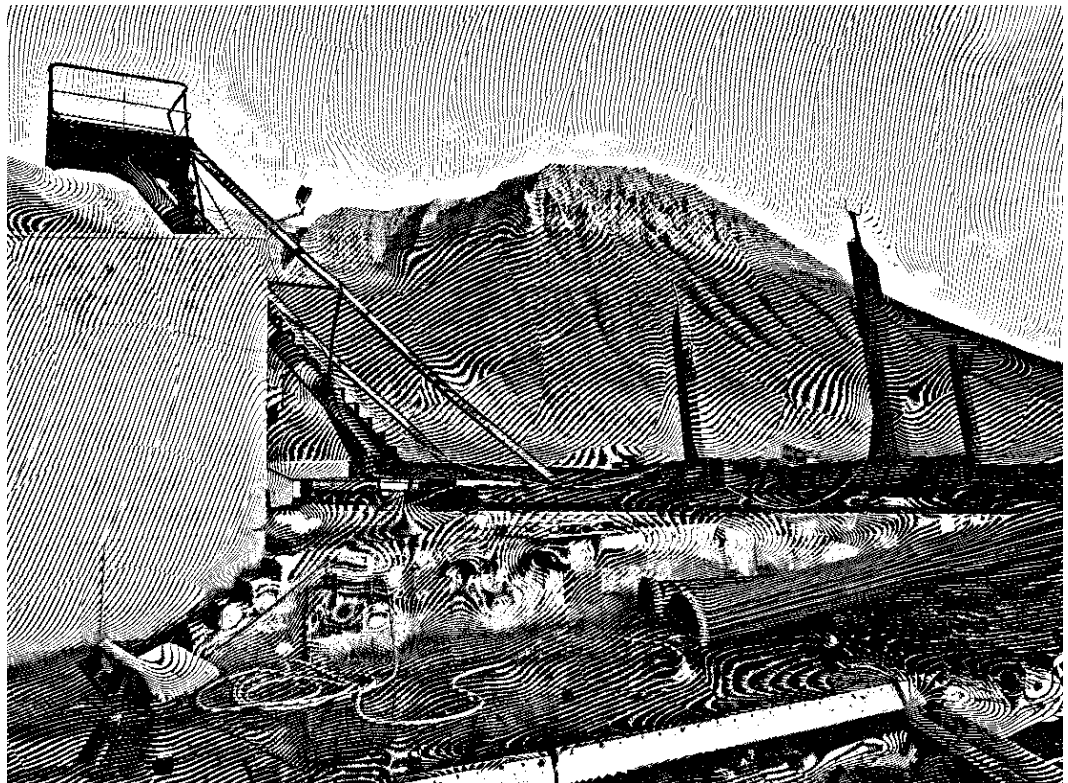
[Memory dots](#)

[Versions](#)

[How to purchase](#)

[Questions](#)

India Ink is a plug-in filter for paint programs. It converts color or greyscale images into several unusual styles of black-and-white halftones suitable for black-and-white printing.



## How to install

Illustrated installation instructions are online at [www.flamingpear.com/faq.html](http://www.flamingpear.com/faq.html) .

To use this software, you need to install it into Photoshop.

Just drag the plug-in filter into the folder where Photoshop expects to find it. On OS X, it will be similar to Applications/Adobe Photoshop/Plug-ins.

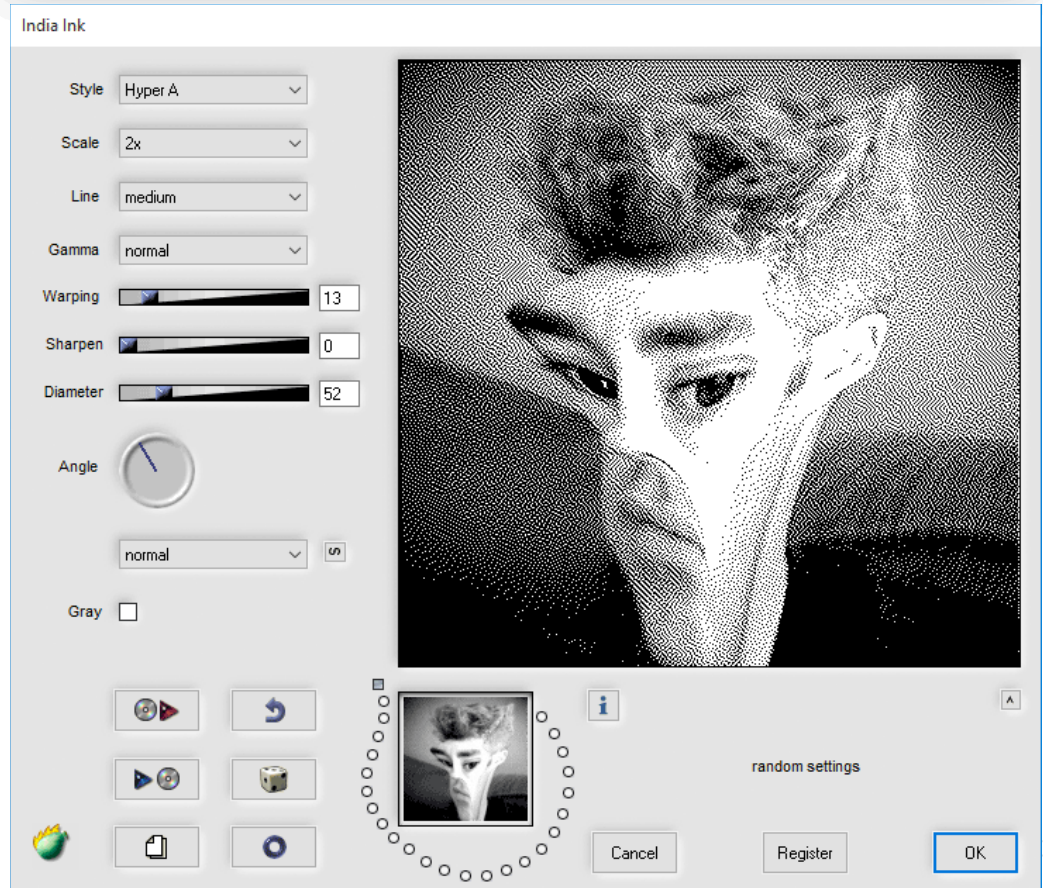
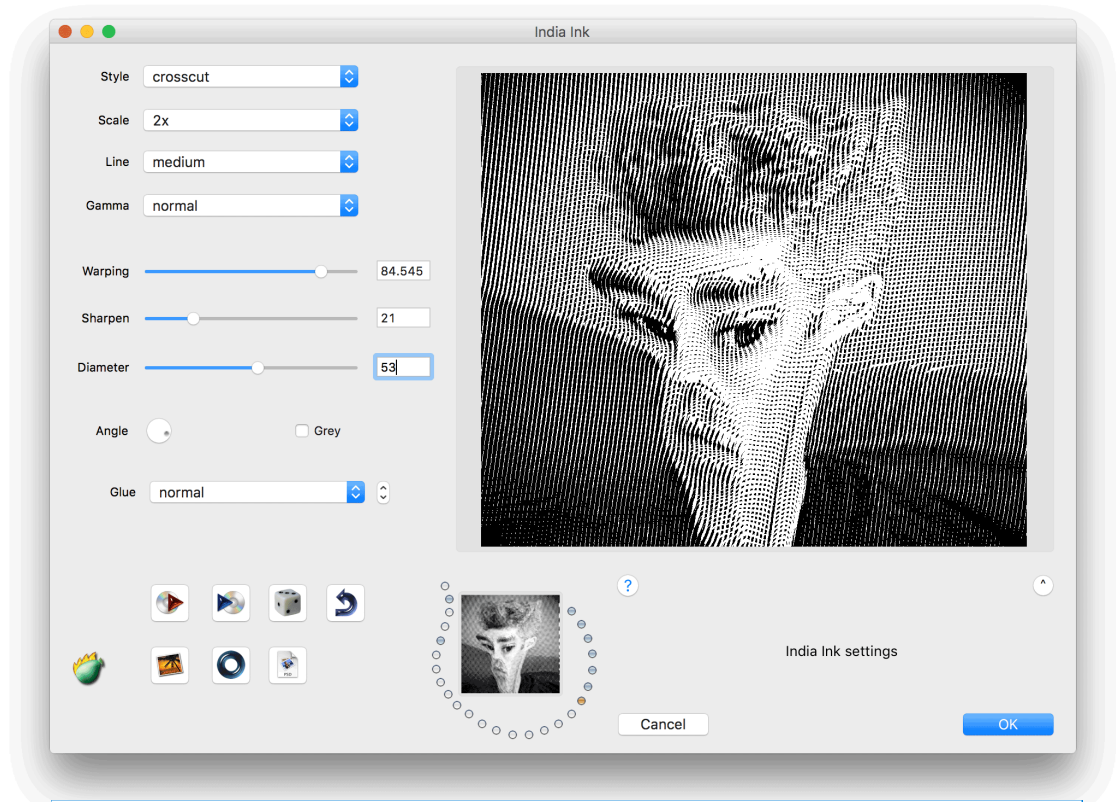
On Windows, it will be similar to C:/Program Files/Adobe/Adobe Photoshop/Plug-ins.

You must restart Photoshop before it will notice new plug-ins.

The plug-in is now installed. To use it, open any image and select an area. From the menus, choose Filter > Flaming Pear > India Ink.

## Quick start

When you invoke India Ink, a dialog box will appear.

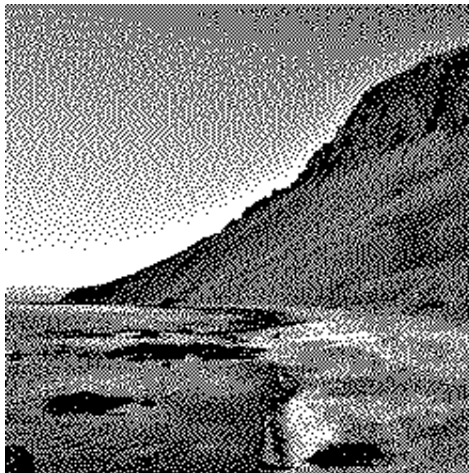


If you just want to see some effects quickly, click the dice button until you see an effect you like; then click OK.

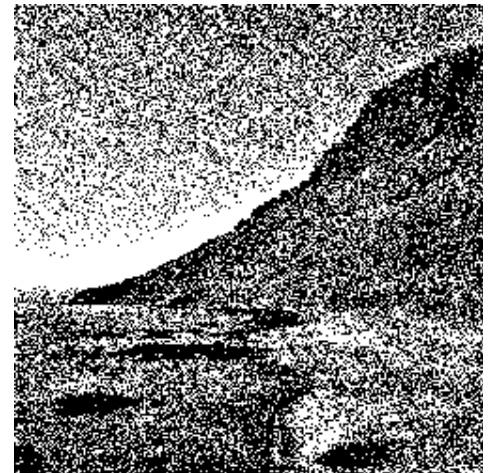
Using the dice is the easiest way to use India Ink. If you want to hand-tune your own effects, it helps to learn the controls:

## Controls

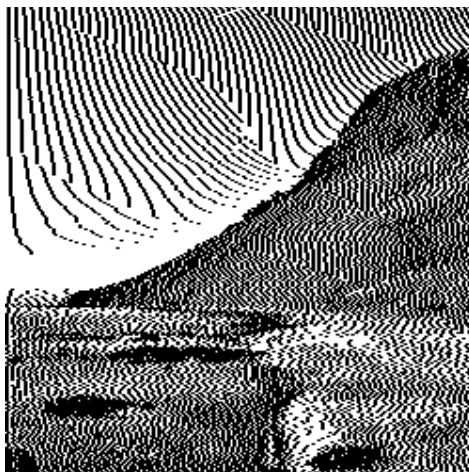
**Style:** Several different styles of halftone are available.



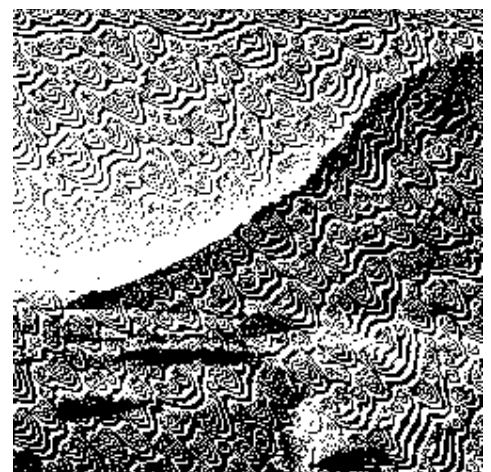
diffusion



noise



ripple

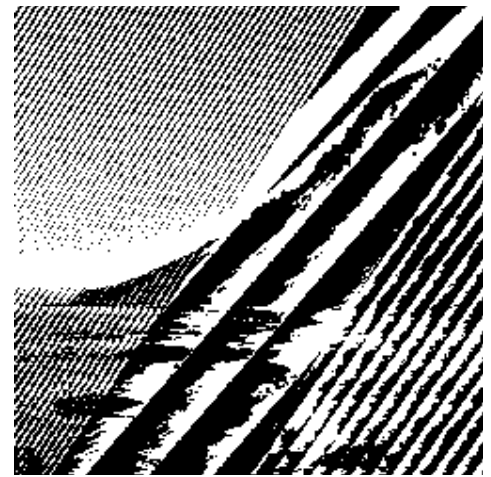


arabesque

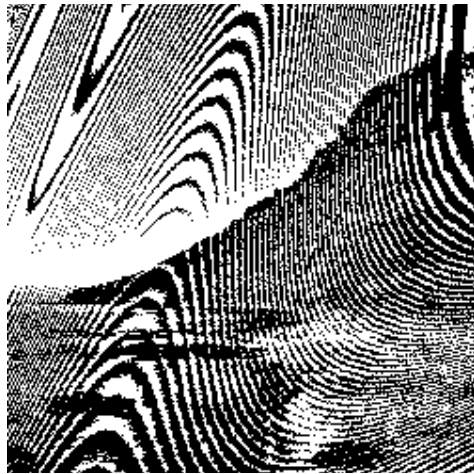




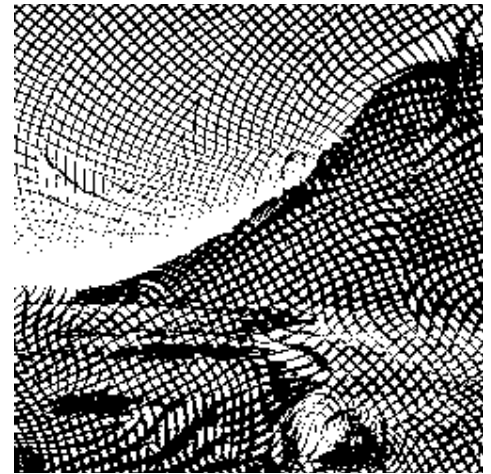
wave



arabesque



round



basketweave



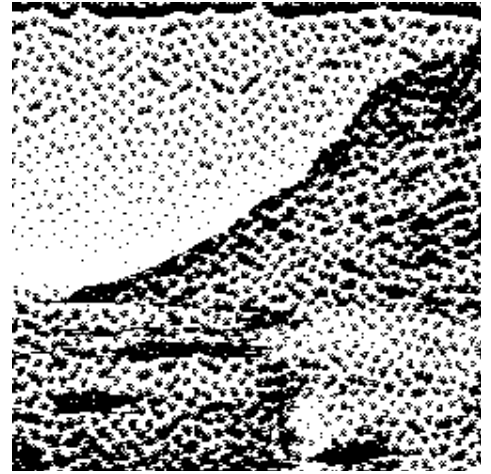
crosscut



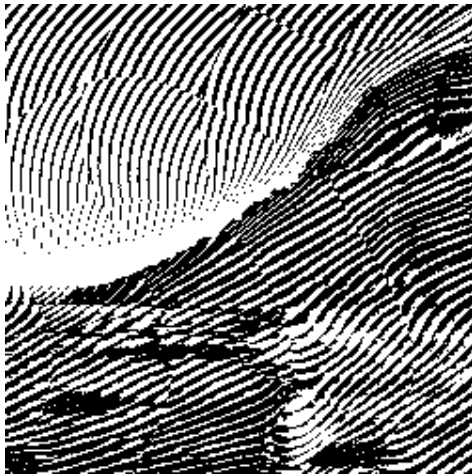
maze



xor



splatter



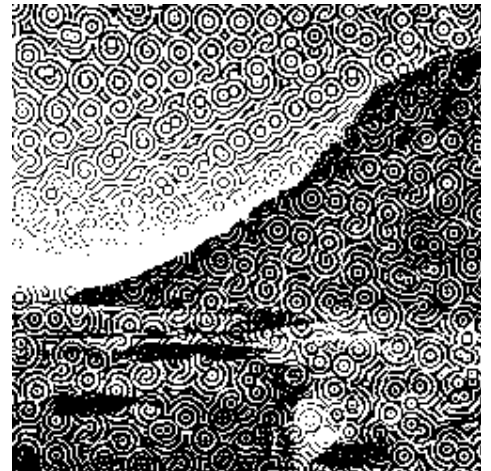
flow



hatching



shards

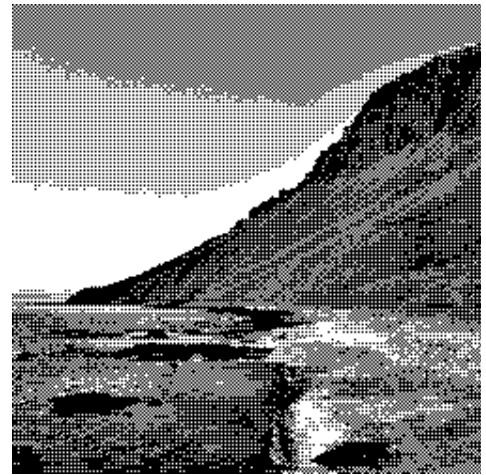


bubbles

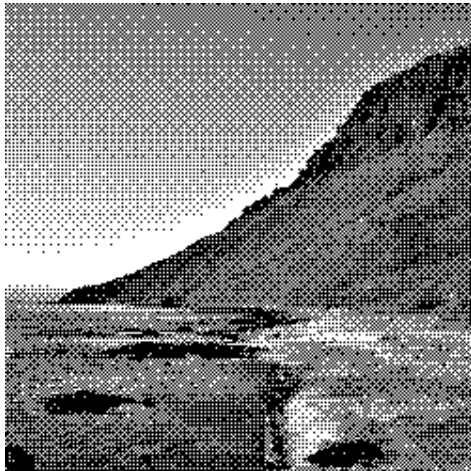




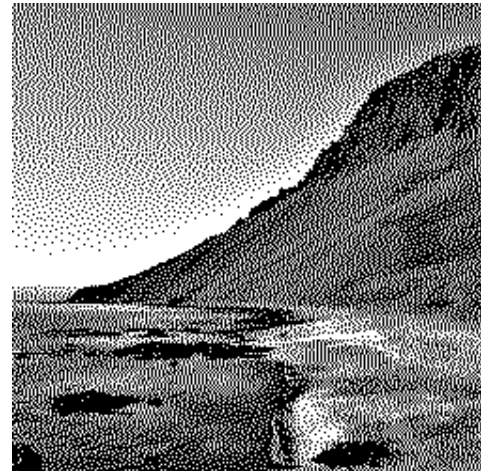
poster tone 1



poster tone 2



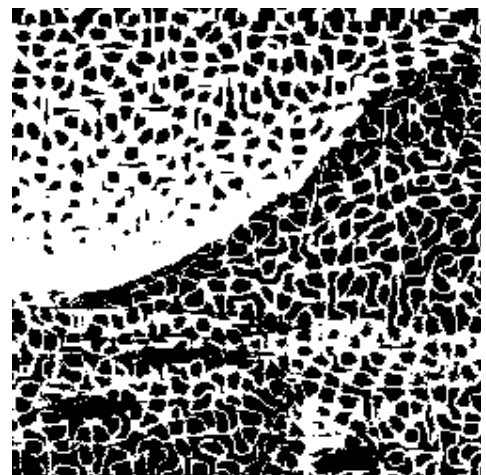
Bayer



Ostromoukhov



spots



netting



Hyper A



Hyper B



original image

Some of the styles do not make use of all the other controls; so when you choose such a style, some other controls may become inactive.

**Scale:** Lets you magnify the halftone pattern by 1x, 2x, or 4x.

**Line:** This control lets you choose five different line weights. It has a slightly different effect with each style, so be sure to experiment.



**Gamma:** Some styles draw light areas and dark areas with different patterns. The gamma control lets you draw dark areas with the pattern used for light areas, or vice versa.

**Warping:** Some styles let the colors in the image warp their pattern; the warping controls says how much.

**Angle:** For warpable styles, the angle control sets the direction of warping. (Except for the style "wave," where it sets the angle of the wavy pattern.)

**Sharpen:** This lets you increase the contrast of edges in your image. Many images look better with some sharpening. It also improves the warping of some halftone styles like "basketweave".

**Diameter:** Controls the width of the contrasty area around edges.

## Other controls

**Dice:** This randomizes the settings. Click it as much as you want to see different effects.



dice

**Reset:** Gives you the factory settings.



reset

**Glue:** Lets you combine the result image with the original, instead of replacing it. The **next-glue** button advances to the next glue mode.



next glue

**Send to photo manager:** Sends the result to Photos (on Macintosh).



send to photo manager

**Export to PSD:** Renders the result to a .psd file.



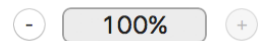
export to PSD

**Make Gallery:** Builds a web page showing all the presets in a folder that you choose.



make gallery

**Plus, % and minus buttons:** If the selected image area is bigger than the preview, these buttons let you zoom in and out. Drag the preview to move it.–



**Load preset:** Presets are files containing settings. To load one, click this button and browse for a preset file.



load preset

**Save preset:** When you make an effect you like, click this button to save the settings in a file.



save preset

**Undo** backs up one step.



undo

**Info:** briefly explains the controls.



info

Three more buttons:

**OK:** Applies the effect to your image.

**Cancel:** Dismisses the plug-in, and leaves the image unchanged.

**Register:** Allows you to type in a registration code and remove the time limit from the demo.

## Memory dots

Although you can [save your settings permanently to files](#), you can also stash settings in memory dots.

Click an empty dot to stash the current settings in it.

Click a full dot to retrieve its settings.

Hover the mouse over a dot to see what it contains.

Option-click to erase a dot on Macintosh.

Right-click to erase a dot on Windows.

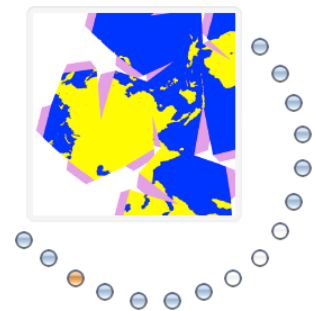
If a dot is orange, India Ink's currently using that dot's settings.

Dots remember their contents until you erase them. If you'd rather make a temporary dot that forgets when you exit India Ink, control-click it. Temporary dots are square.

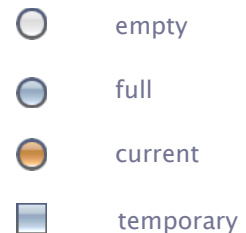
When you start India Ink, it puts the starting settings in a temporary dot. That way it's easy to start over without exiting the plug-in.

On Mac, you can drag-and-drop settings files from the central memory well.

You can build a web page showing how the current image would look with every memdot setting. Just option-click (Mac) or right-click (Windows) on the big memdot image.



memory dots





## **Version history**

### **Version 1.9998**

Improves the interface on high-DPI Windows monitors.

### **Version 1.9997**

Restores compatibility with Mac OS X 10.8.

### **Version 1.9996**

Restores 32-bit compatibility on Mac OS X.

### **Version 1.9995**

Improves the appearance of the live preview.

### **Version 1.9994**

Fixes an issue with registration codes.

### **Version 1.9993**

Restores compatibility with Mac OS X 10.7.

### **Version 1.9991**

Macintosh version works in both 32- and 64-bit modes.

### **Version 1.999**

Macintosh version works in Retina resolution.

**Version 1.997**

Fixes previews in 16-bit color.

**Version 1.995**

Fixes issues with stability and misaligned freeform selections in previews.

**Version 1.994**

64-bit version for Macintosh.

**Version 1.993**

64-bit version for Windows. Adds the Hyper A and Hyper B styles.

**Version 1.992**

Fixes horizontal stripes that can appear when sharpening is used.

**Version 1.991**

Fixes vertical stripes that can appear when sharpening is used.

**Version 1.99**

Adds convenience features to the interface. The Mac version is resizable.

**Version 1.98**

Fixes a Macintosh problem where the plug-in could have bad settings or crash when installed on a machine for the first time.

**Version 1.97**

Fixes a problem in the Macintosh version where a blocky appearance results from sharpening. Fixes a Windows problem where the plug-in wouldn't remember its registration when it was installed in one user account but activated in another.

**Version 1.96**

Universal binary for Macintosh. Preset files have icons. Works as a Smart Filter in Adobe Photoshop CS3.

**Version 1.95**

Adds previews in the file chooser. Two new glue modes.

**Version 1.94**

Fixes a problem in 16-bit mode where only part of the image would be processed.

**Version 1.92**

Adds spots, netting, and spider styles. Previews better resemble the final result.

**Version 1.9**

Works faster, works with 16-bits-per-component color, and has new glue modes.

**Version 1.85**

Recordable as a Photoshop action.

**Version 1.8**

Makes the preview larger; adds more glue modes and the next-glue button.

**Version 1.75**

Adds new styles: poster tone 2, Bayer, and Ostromoukhov.



**Version 1.72**

Fixes a crash that could happen when using the menus under Windows XP.

**Version 1.71**

Adds new glue modes: Hard Light, Overly, Superlay, Exclusion, Color, Luminance, Linear Light, and Pin Light. Fixes the appearance of text in the interface when running under Mac OS X 10.2.3 . Removes the zoom controls, which did not give properly shrunken previews.

**Version 1.7**

Adds the 'poster tone' style and adds previews to the preset browser.

**Version 1.6**

Adds an Undo button.

**Version 1.5.2**

Improved compatibility with non-Photoshop paint programs.

**Version 1.5**

Built-in image sharpening and improved pattern warping.

**Version 1.4.6**

Improved stability, and added the conversion utility for settings files.

**Version 1.4.5**

Fixed another display bug similar to 1.4.1.

**Version 1.4.1**

Fixed a display bug that made the text vanish from the popup menus under Mac OS 8.

#### **Version 1.4**

Added the preview, the presets, and the glue modes.

#### **Version 1.3**

Added the styles 'shards' and 'bubbles'.

#### **Version 1.2**

Added the style 'hatching,' and redesigned the interface.

#### **Version 1.1**

The first public release, with 13 halftone styles.

### **How to purchase**

You can place an order online [here](#). A secure server for transactions is available.

### **Questions**

The software, documentation, and supporting materials are made by Flaming Pear Software. Answers to common technical questions appear on our [support page](#), and free updates appear periodically on the [download page](#).

For bug reports and technical questions, please write to [support@flamingpear.com](mailto:support@flamingpear.com).

©2017 Flaming Pear Software